

# CYPRriot AND OTHER EUROPEAN STUDENTS TUITION AND FEES

---

ACADEMIC YEAR 2020-2021



UNIVERSITY *of*  
**NICOSIA**

[unic.ac.cy](http://unic.ac.cy)

The tuition for the new students of the academic year 2020-2021 is based on the European Credit Transfer and Accumulation System (ECTS), which provides a clear and transparent method of calculating the semester and yearly tuition (based on the number of ECTS registered per semester/year).

## BACHELOR'S PROGRAMMES

	Language of Instruction	Total ECTS	Yearly Tuition (for 60 ECTS)
			€
<b>SCHOOL OF BUSINESS</b>			
Accounting	English/Greek <sup>1</sup>	240	8,880
Business Administration	English/Greek <sup>1</sup>	240	8,880
Energy, Oil and Gas Management	English/Greek <sup>1</sup>	240	8,880
Hospitality Management	English/Greek <sup>1</sup>	240	8,880
Management Information Systems (MIS)	English/Greek <sup>1</sup>	240	8,880
Marketing	English/Greek <sup>1</sup>	240	8,880
Sports Management	English/Greek <sup>1</sup>	240	8,880
Tourism, Leisure and Events Management	English/Greek <sup>1</sup>	240	8,880
<b>SCHOOL OF EDUCATION</b>			
Dance	English	240	9,900
Music	English	240	9,240
Pre-Primary Education	Greek	240	8,700
Primary Education	Greek	240	8,700
<b>SCHOOL OF HUMANITIES AND SOCIAL SCIENCES</b>			
Applied Multimedia	English/Greek <sup>1</sup>	240	8,880
Architecture	English/Greek <sup>1</sup>	240/300	8,880
Digital Communication and Mass Media	English/Greek <sup>1</sup>	240	8,880
English Language and Literature	English	240	8,880
Fine Art	English/Greek <sup>1</sup>	240	8,880
Graphic Communication	English/Greek <sup>1</sup>	240	8,880
Interior Design	English/Greek <sup>1</sup>	240	8,880
Psychology	English/Greek	240	8,880
Public Relations, Advertising and Marketing	English/Greek <sup>1</sup>	240	8,880
Social Work	Greek	240	8,880
<b>SCHOOL OF LAW</b>			
International Relations and European Studies	English	240	8,880
Law	English/Greek	240	8,940
<b>SCHOOL OF SCIENCES AND ENGINEERING</b>			
Civil and Environmental Engineering	English/Greek <sup>1</sup>	240	8,940
Computer Engineering	English/Greek <sup>1</sup>	240	9,240
Computer Science	English/Greek <sup>1</sup>	240	8,940
Data Science	English/Greek <sup>1</sup>	240	9,240
Electrical Engineering	English/Greek <sup>1</sup>	240	9,240
Human Biology	English/Greek	240	10,140
Mechanical Engineering	English/Greek <sup>1</sup>	240	8,940
Nursing	English	240	9,240
Nutrition and Dietetics	Greek	240	9,540
Oil and Gas Engineering	English/Greek <sup>1</sup>	240	9,240
Pharmacy <sup>2</sup>	Greek	300	9,900
Physiotherapy	Greek	240	10,620
Sports Science	Greek	240	9,240
<b>MEDICAL SCHOOL</b>			
Medicine (Doctor of Medicine, MD) <sup>3</sup>	English	360	18,000/22,000
Bachelor of Medicine and Bachelor of Surgery (MBBS) – In cooperation with St George's University of London	English	330	30,000

<sup>1</sup> The entire programme is offered in English. Additionally, a number of courses may also be offered in Greek during the first two years.

<sup>2</sup> The Pharmacy programme is charged with tuition of €9,900 for each of the first 4 years of study only (240 ECTS) and no tuition is charged for the 5<sup>th</sup> year practicum (60 ECTS). As a result, the average annual tuition for 5 years is €7,920.

<sup>3</sup> Tuition is €18,000 for each of the first 3 years and €22,000 for each of the remaining 3 years.

## MASTER'S PROGRAMMES

	Language of Instruction	Total ECTS	Tuition for the Entire Programme €
<b>SCHOOL OF BUSINESS</b>			
Business Administration	English	90	9,630
<b>SCHOOL OF EDUCATION</b>			
Education Sciences	Greek	90	9,450
<b>SCHOOL OF HUMANITIES AND SOCIAL SCIENCES</b>			
Clinical Psychology	English	180	25,920
Counseling Psychology	English	150	21,600
Criminology	Greek	90	9,450
Digital Art and Design	English	90	9,450
Digital Media and Communications	English	90	9,450
Educational Psychology	Greek	90	12,240
School Psychology	Greek	150	20,400
Social Work	Greek	90	9,450
Teaching Greek to Speakers of Other Languages	Greek	90	9,450
Teaching English to Speakers of Other Languages (TESOL)	English	90	9,450
Theology	Greek	90	7,920
<b>SCHOOL OF LAW</b>			
Criminal Law and Addictions <sup>1</sup>	Greek	90	4,000
International Relations and European Studies	English	90	9,450
Law	English/Greek	90	9,180
Law and Politics in the European Union	English/Greek	90	9,450
Public Administration	Greek	90	9,450
<b>SCHOOL OF SCIENCES AND ENGINEERING</b>			
Biomedical Sciences	English	90	13,320
Clinical Dietetics	Greek	120	8,880
Computer Science	English	90	9,990
Contemporary Nursing	Greek	90	9,450
Exercise Science and Physical Education	Greek	90	6,930
Oil, Gas and Energy Engineering	English	90	9,990
Physiotherapy and Rehabilitation	Greek	90	9,990
Sports Nutrition/Dietetics and Nutrition Intervention	Greek	90	9,450
<b>MEDICAL SCHOOL</b>			
Family Medicine (MSc/PgDip)	English	90/60	18,000/12,000

<sup>1</sup> Joint Degree with Aristotle University of Thessaloniki.

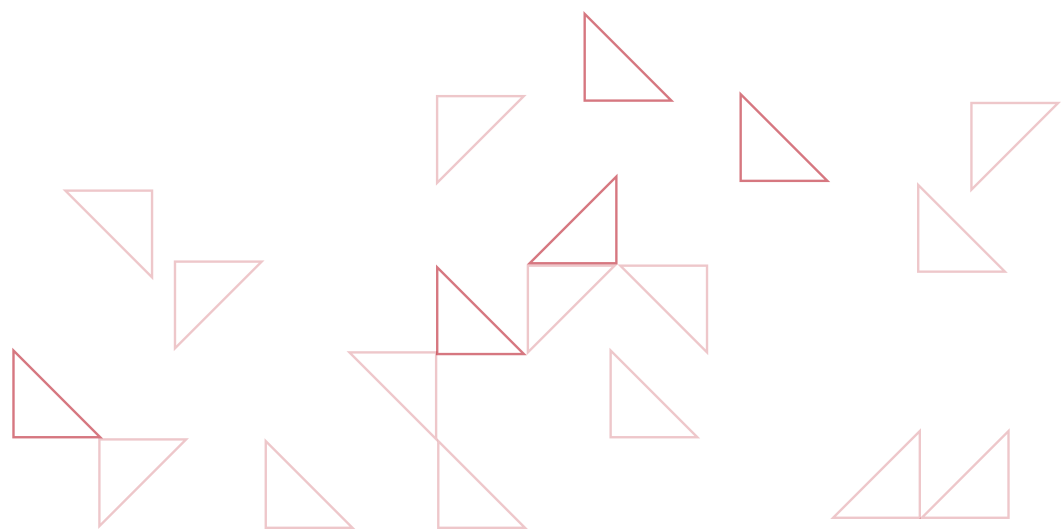
## FINANCIAL AID/SCHOLARSHIPS

The University of Nicosia offers a number of scholarships to full-time undergraduate Cypriot and other EU students, based on academic merit, athletic performance and/or financial need.

For information: Admissions Department  
T.: +357 22841528 | Email: [admissions@unic.ac.cy](mailto:admissions@unic.ac.cy) | WhatsApp/Viber: +357 95147167

## DOCTORAL PROGRAMMES

	Language of Instruction	Tuition for the Entire Programme <sup>1</sup>
		€
<b>SCHOOL OF BUSINESS</b>		
Business Administration (PhD)	English/Greek	13,500
<b>SCHOOL OF EDUCATION</b>		
Education Sciences	Greek	13,500
<b>SCHOOL OF HUMANITIES AND SOCIAL SCIENCES</b>		
Criminology	English/Greek	13,500
Media and Communications	English/Greek	13,500
Psychology	English	13,500
Teaching English to Speakers of Other Languages (TESOL)	English	13,500
Theology	Greek	13,500
<b>SCHOOL OF LAW</b>		
Human Rights, Society and Multi - Level Governance <sup>2</sup>	English	13,500
International Relations and European Studies	English/Greek	13,500
Law	English/Greek	13,500
Public Administration	English/Greek	13,500
<b>SCHOOL OF SCIENCES AND ENGINEERING</b>		
Computer Science	English/Greek	13,500
Electrical Engineering	English	13,500
Exercise Science and Physical Education	English/Greek	13,500
Nursing	English/Greek	13,500
Nutrition and Dietetics	English/Greek	13,500
Oil, Gas and Energy Engineering	English	13,500
Physiotherapy	English/Greek	13,500
<b>MEDICAL SCHOOL</b>		
Medical Sciences	English	13,500
<sup>1</sup>	The tuition of €13,500 shown above represents total tuition for 3 years. For each additional academic year (maximum 3 years), the tuition is €1,500 per year.	
<sup>2</sup>	Joint Degree with the University of Padova, the University of Zagreb and the University of Western Sydney.	



## ONLINE/DISTANCE LEARNING PROGRAMMES

<b>BACHELOR'S PROGRAMMES</b>	Language of Instruction	Total ECTS	Yearly Tuition (for 60 ECTS)
			€
Business Administration	English/Greek	240	6,300
English Language and Literature	English	240	6,300
Hospitality Management	English	240	6,300
Psychology	English	240	6,300

<b>MASTER'S PROGRAMMES</b>	Language of Instruction	Total ECTS	Tuition for the Entire Programme
			€
Banking, Accounting and Finance <sup>1</sup>	Greek	120	4,500
Business Administration	English/Greek	90	6,660
Computational Design and Digital Fabrication <sup>2</sup>	English	90	12,060
Computer Science	English	90	12,060
Criminology	Greek	90	6,300
Data Science	English	90	12,060
Digital Currency <sup>3</sup>	English	90	12,960
Drug Regulatory Affairs	English	90	12,060
Educational Psychology	Greek	90	6,300
Education Sciences	Greek	90	6,300
Family Medicine (MSc / PgDip)	English	90/60	18,000/12,000
Greek Civilization	English	90	12,060
Health Services Administration	English	90	12,060
International Relations and European Studies	English/Greek	90	6,300
Law (LLM)	English/Greek	90	6,300
Law and Politics in the European Union	Greek	90	6,300
Law of the Economy and of the Enterprises <sup>1</sup>	Greek	120	5,400
Public Administration	Greek	90	6,300
Public Health	English	90	12,060
Social Work	Greek	90	6,300
Special Education <sup>4</sup>	Greek	120	5,500
Teaching English to Speakers of Other Languages (TESOL)	English	90	6,300
Teaching Greek to Speakers of Other Languages	Greek	90	6,300
Theology	Greek	90	6,120

<sup>1</sup> Joint Degree with the Hellenic Open University.

<sup>2</sup> In collaboration with the University of Innsbruck.

<sup>3</sup> One course with 10 ECTS is offered through Massive Open Online Course (MOOC) free of charge.

<sup>4</sup> Joint Degree with the University of Patras.



## OTHER FEES

	On-Campus Programmes	Online/DL Programmes
	€	€
Application fee (one-off payment)	55	55
Registration fee (per semester)	26	0
Student Activities fee (per semester)	20	0
Technology fee (per semester)	15	0
Transcript fee (per copy)	5	5
Evaluation fee (transfer credits/ECTS)	52	52
Second Exam fee (per course)	65	65
Graduation Application fee	60	60

For the Medical School programmes other fees and method of payment may apply.

## EXAMPLE OF YEARLY TUITION FOR ON-CAMPUS PROGRAMMES

For example, the tuition and other fees for a full-time student enrolled in the On-Campus Accounting Bachelor programme (Total 240 ECTS and tuition €148 per ECTS), who is registered for 30 ECTS per semester (60 per year), are as follows:

Number of ECTS	30	30	60
	Fall 2020	Spring 2021	Yearly Tuition
	€	€	€
Tuition	4,440	4,440	8,880
Registration fee (per semester)	26	26	52
Student Activities fee (per semester)	20	20	40
Technology fee (per semester)	15	15	30
	<b>4,501</b>	<b>4,501</b>	<b>9,002</b>

**Note:** Other fees, including Transcripts, Evaluations, Second Exams, and Graduation Applications are charged when the service is requested.

## METHOD OF PAYMENT OF TUITION AND OTHER FEES

(the above fees are included)

	Fall 2020		Spring 2021
	€		€
September (down payment)	1,000	February (down payment)	1,000
31/10/2020	875	31/03/2021	875
30/11/2020	875	30/04/2021	875
31/12/2020	875	31/05/2021	875
31/01/2021	876	30/06/2021	876
	<b>4,501</b>		<b>4,501</b>

For information about the various payment options please visit the University's website at [unic.ac.cy](http://unic.ac.cy)

## NOTES

- 1 According to the education system followed by the University of Nicosia, tuition is calculated and charged according to the number of ECTS a student is enrolled in every semester. Some students may need to take pre-university English courses (based on their score in the English Placement Test). These courses carry additional teaching hours per week and fewer ECTS and the tuition is based on the teaching hours.
- 2 Normal (full) attendance corresponds to 30 ECTS per semester (60 ECTS per year).
- 3 The University offers scholarships to undergraduate Cypriot full-time on-campus students based on various criteria (high school leaving certificate, participation in sports activities, families with financial difficulties, large families, etc.). Details of these scholarships are provided in a separate leaflet.
- 4 Scholarships/financial aid, apply to tuition and are deducted from the four instalments of each semester.

## Contact us

46, Makedonitissas Avenue  
CY-2417, P.O.Box 24005, CY-1700  
Nicosia, Cyprus

Tel.: +357 22841528  
Email: [admissions@unic.ac.cy](mailto:admissions@unic.ac.cy)  
WhatsApp/Viber: +357 95147167